

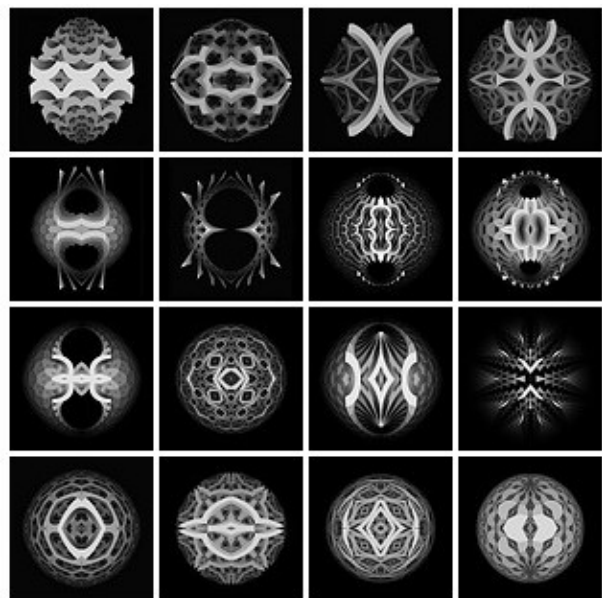
© artist

Paul Prudence [paulprudence.com] is an artist and real-time visual performer working with generative-computational systems, audio responsive visual feedback and processed video. He is particularly interested in the ways in which sound, space and form can be synaesthetically amalgamated. He is a writer and researcher in the field of visual music, process art, and computational design. His artworks, performances and lectures have been presented worldwide.

Paul will talk about his sonified generative artworks and his work using autocatalytic feedback systems. He will also talk about his recreational research weblog, *Dataisnature*, which covers a diverse range of subjects that are interrelated, such as algorithmic art, process art, earth processes and geomorphology.

Computation and Feedback: Sonified Generative Artwork

An LKL Maths-Art seminar by
Paul Prudence
Tuesday 13 April 2010,
6.00–7.30pm
London Knowledge Lab,
WC1N 3QS



© artist

All welcome. No registration or ticket required, but an email to lkl.maths.art@gmail.com is appreciated to assist with planning.

LKL Maths-Art seminar series

Website and archive: www.lkl.ac.uk/events/maths-art

This seminar is part of a regular series of maths-art seminars held at the London Knowledge Lab, usually on the second Tuesday of each month during term times. To receive email announcements about events, subscribe to the mailing list at: www.dcs.bbk.ac.uk/mailman/listinfo/lkl-maths-art .

We propose these seminars as explorations of the connections between "mathematics" and "art", where both terms are understood broadly: art implies visual art (painting, drawing, sculpture, computer graphics, video), architecture, music, textile art, literature/poetry (and others), and mathematics implies both mathematics as a discipline and the related disciplines in science and engineering for which mathematics is an essential means of expression and communication.

Next seminars: June 8, Linda Karshan, 'Measure without measure: The art of Linda Karshan'. The 2010-2011 seminar programme will start in September

The seminar organisers are John Sharp and Phillip Kent. We welcome your suggestions about speakers or topics for future seminars; email us at lkl.maths.art@gmail.com .

Getting to the London Knowledge Lab

Nearest tube stations are: Holborn (Central, Piccadilly lines), Russell Square (Piccadilly line). Approximately 10-15 minutes walk from either station.

